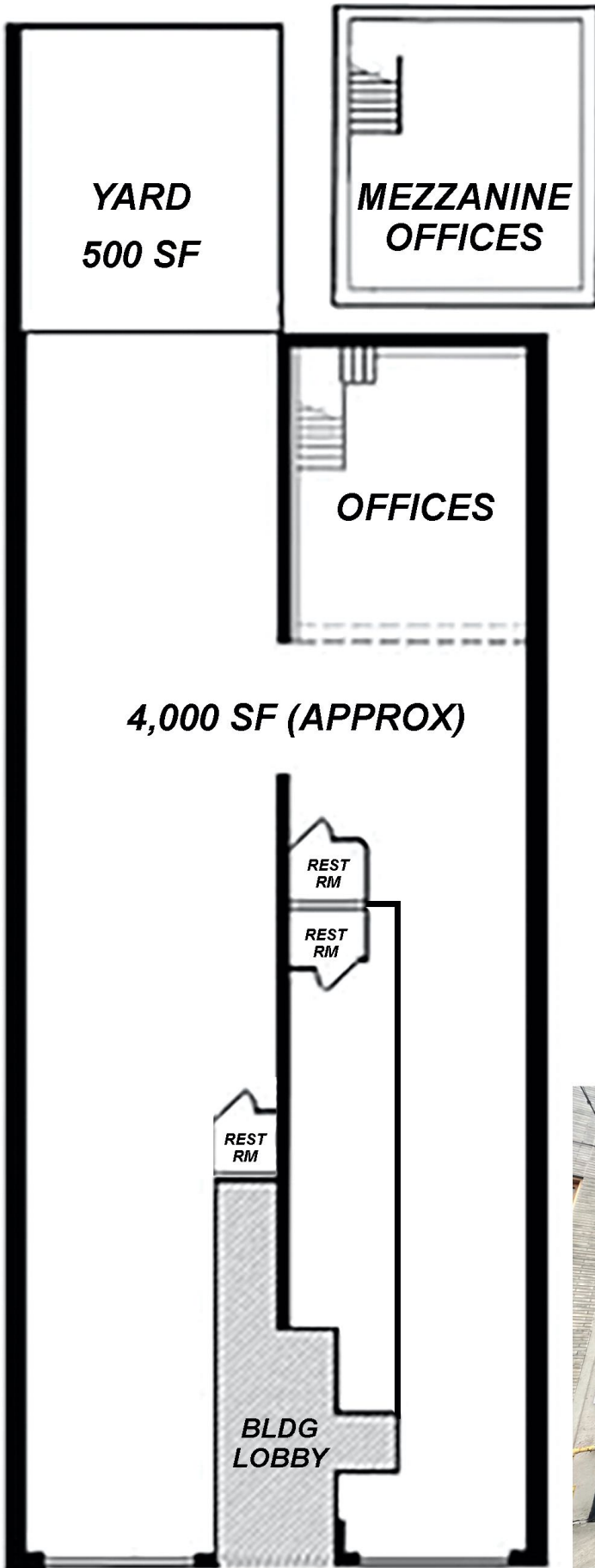


**152 BEARD ST.
BROOKLYN NY 11231**

- 4,000 SF WAREHOUSE**
- 500 SF YARD**
- 2 LARGE ROLLUP GATES**
- MEZZANINE**
- 3 PRIVATE OFFICES**
- 4 RESTROOMS**
- SPRINKLER SYSTEM**
- DELIVERED VACANT**
- STORAGE AREA**
- HIGH CEILINGS**

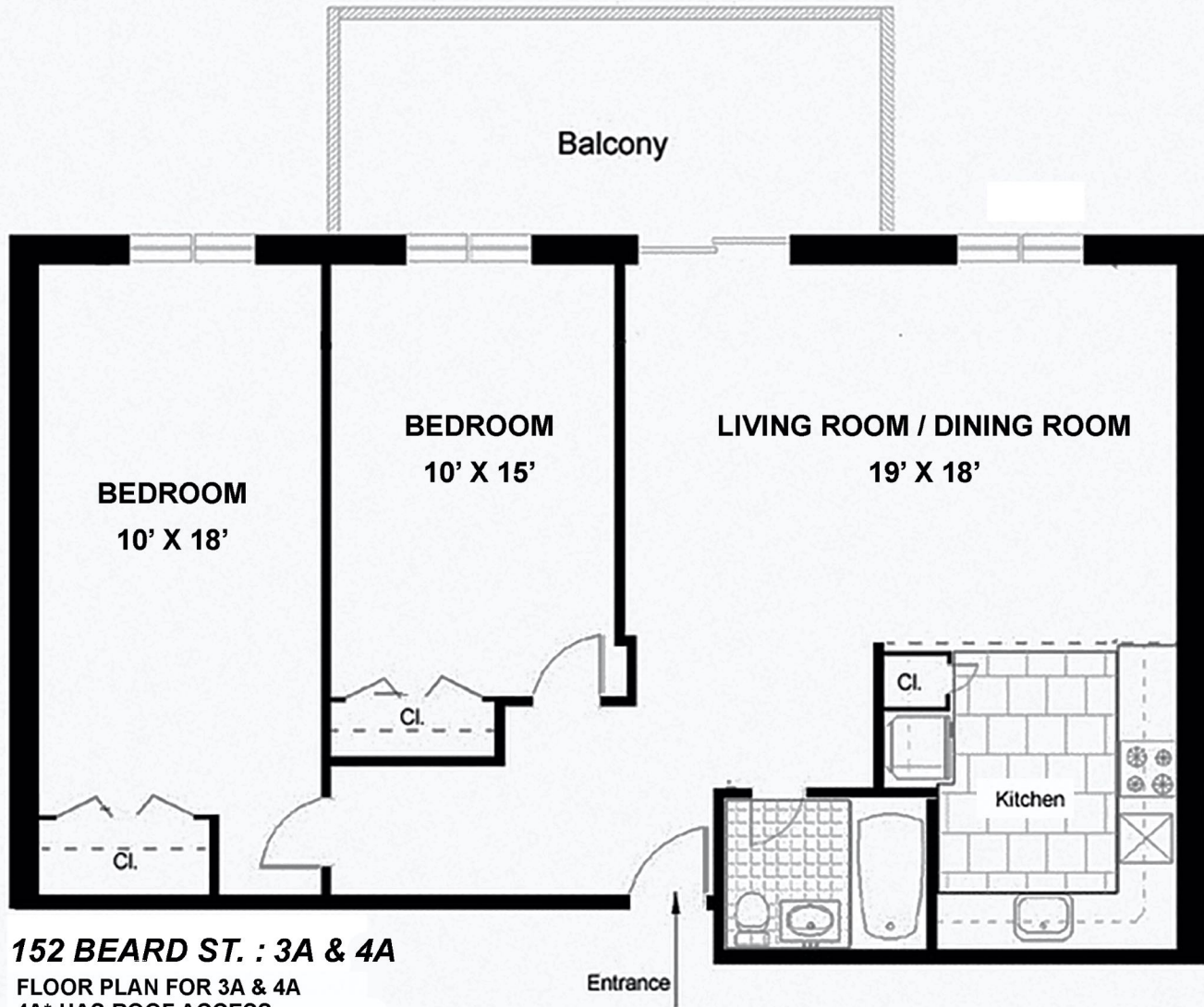
125 FT.

100 FT.



40' FRONTAGE (BEARD ST)





152 BEARD ST. : 3A & 4A

FLOOR PLAN FOR 3A & 4A

4A* HAS ROOF ACCESS

950 SF PER UNIT

(ALL MEASUREMENTS ARE APPROXIMATE)

LIVING ROOM / DINING ROOM

14' X 18'

Balcony

BEDROOM

10' X 14'

BEDROOM

9' X 13'

Kitchen

Entrance

Cl.

Cl.

152 BEARD ST: 4B

**FLOOR PLAN FOR 4B
4B* HAS ROOF ACCESS
900 SF**

(ALL MEASUREMENTS ARE APPROXIMATE)

